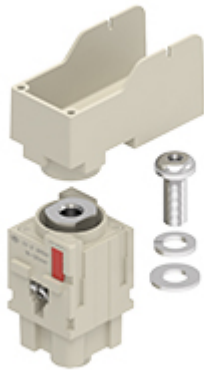


Part number

CX 01 30PEAF



Female modular insert, Mixo series, screw terminal connections - 90° angled for cable lug, 1 pole, 2 modules, 300 A, PE module for earth termination

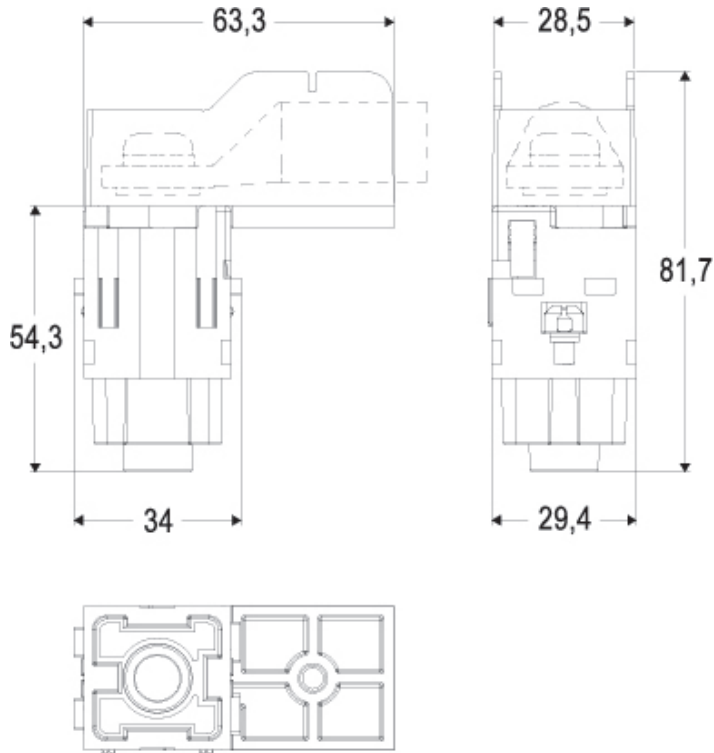
Product description		Material properties	
Product type	Modular insert	Main material	Polycarbonate
Series	Mixo	Other materials	Contacts: copper alloy
Connection type	Screw terminal connection	Colour	RAL 7032 grey
Gender	Female	RoHS conformity	Compliant with exemption 6(c); copper alloy containing up to 4% lead by weight
N. of poles	1 PE pole	China RoHS - EFUP	50
Size	2 modules	REACH SVHC substances	Yes Lead
Specification	For C30 contacts (16-7 mm) PE angled MIXO Module	General ordering information	
Technical data		EAN13 code	8015747289900
Current	300 A	eCl@ss 8.1	27440205
Rated impulse withstand voltage	8 kV	ETIM 7.0	EC000438
Pollution degree	3	Packaging Information	
Contact type	Turned silver plated	Packaging length	112,00 mm
IP degree of protection	IP20 without enclosure, IP65/IP66/IP68/IP69 with enclosure	Packaging height	95,00 mm
Further technical details		Packaging width	117,00 mm
Mating cycles	≥ 500	Packaging volume	1,24 dm ³
Contact resistance	≤ 3 mΩ	Packaging description	Carton box
Weight	2,00 g	Packaging quantity	5 Pcs
Operating temperature range (min, max)	-40 °C ... +125 °C	Packaging EAN code	8015747290128
UL 94 flammability rating	V-0	Sub-packaging description	Plastic bag
		Sub-packaging quantity	1 Pcs
		Sub-packaging EAN barcode	8015747290135

Part number

CX 01 30PEAF



Catalogue drawings



Notes

AVAILABLE FROM: JUNE 2023

the modular inserts must be installed in suitable frames which in turn are installed in traditional housings or COB panel support

Dimensions shown in mm are not binding and may be changed without notice.

California Proposition 65 Information



WARNING

This product can expose you to lead and its compounds, known to the State of California to cause cancer and/or reproductive toxicity. For more information go to www.P65Warnings.ca.gov.