



## ii-L&V&L Capacitive Filling Level Probe - KFI Analogue current output 4...20 mA

For dry bulk materials and non-conductive liquids with low dielectric constant (e.g. oil)

- Integrated evaluation electronics
- Adjustable with Easy Teach by Wire, Easy Tech by Magnet
- Connection head and process connection stainless steel VA no. 1.4304 / AISI 316L
- Process connection G1"
- With flange connector M 12 x 1 (incl. EasyTech function)

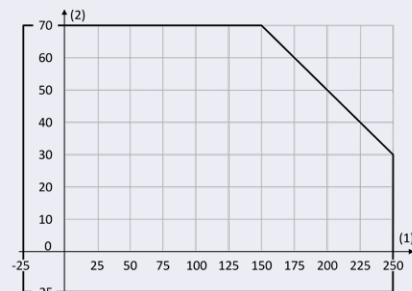
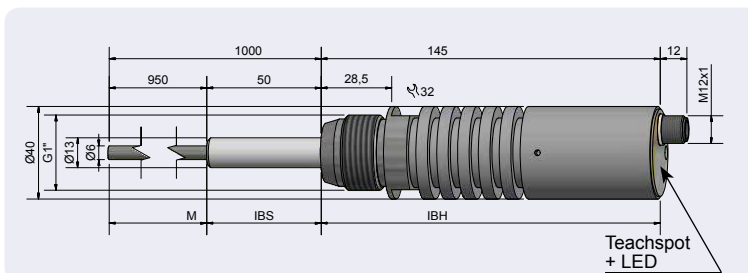
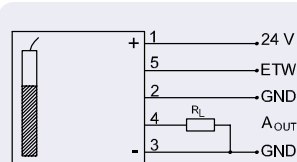


### Technical data

Active zones [M]	950 mm
Electrical version	3 - pin DC
Output function	Analogue
<b>Type</b>	<b>KFI-1-1000-950-VAc/PTFE-D13-TP50-G1-IL-4-ET-Y10</b>
<b>Art.-No.</b>	<b>KI 0147</b>
Operating voltage (U <sub>B</sub> )	15...30 V DC
Permitted residual ripple max.	5 %
Load resistance (R <sub>L</sub> )	≤ 200 Ω
Power consumption (outputs no-load)	1,5 W
Analogue output	4...20 mA
Permitted ambient temperature	-25...+70 °C
Product temperature	-25...+200 °C*
Pressure	0...10 bar
LED-Display	Green
Protective circuit	Built-in
Degree of protection IEC 60529	IP 66
Norm	EN 60947-5-2**
Connection	Flange connector M 12 x 1
Housing material	VA No. 1.4304 / AISI 316L / PTFE (FDA 21 CFR 177.1550)
Active zone	VA No. 1.4304 / AISI 316L
Lid	PC (FDA 21 CFR 177.1580)
Accessories (delivered with the sensor)	Teach magnet
Zubehör (nicht im Lieferumfang enthalten)	#193390, Steckverbinder M12

### EasyTech chart:

- LED green / Adjustment function
- Adjustment Min.
  - Adjustment Max.
  - Factory set
  - Test



(1) Product temperature in °C  
(2) Ambient temperature in °C

\*\*Where applicable

**Made in Germany**

All specifications are subject to change without notice. (19.12.2018)