



## Ex position switch with safety function Ex ES 97 D-02 -60°C Material number: 1430584

### Features/Options:

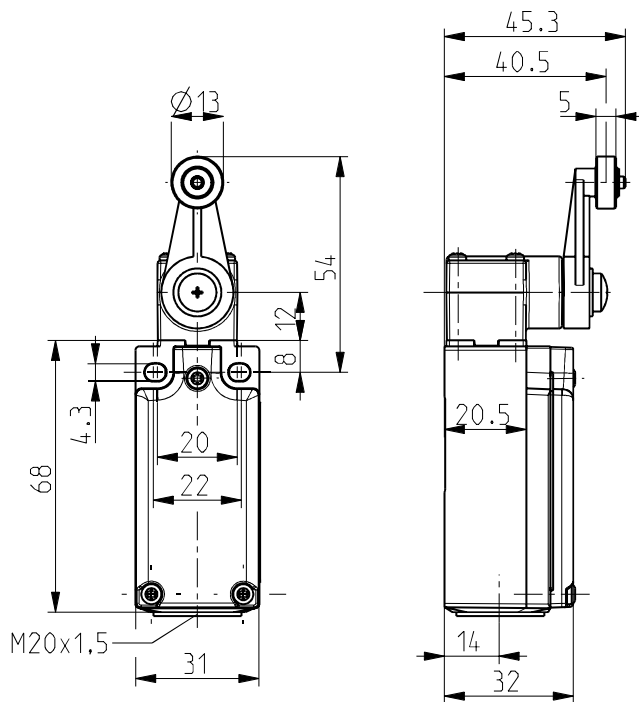
- Ex zone 1 and 21
- Thermoplastic enclosure
- Cold-resistant down to -60 °C
- High degree of protection IP 66 / IP 67 / IP 69
- Design to EN 50047

- Wiring compartment
- Double insulated
- Actuator: Rocking lever D

### Notes

- 1 Ex"e" cable gland M20x1.5 included in delivery

### Dimensions



### Technical data









|                       |  |
|-----------------------|--|
| Applied standards     | EN 60947-5-1, EN 60079-0, EN 60079-1, EN 60079-7, EN 60079-31, EN ISO 13849-1, EN ISO 14119  |
| Enclosure             | thermoplastic, glass-fibre reinforced, impact resistant, self-extinguishing UL 94 V-0  |
| Cover                 | thermoset, glass-fibre reinforced, impact resistant, self-extinguishing UL 94 V-0  |
| Sealing               | silicone   |
| Switch type           | type 1   |
| Coding level          | no coding  |
| Tightening torque     | cover screws: 0.4 ... 0.45 Nm<br>connecting thread of cable gland: max. 2 Nm<br>cap nut of cable gland: max. 5 Nm  |
| Degree of protection  | IP 66 to EN 60079-0 + IEC/EN 60529 (... -60 °C)<br>IP 67 to EN 60079-0 + IEC/EN 60529 (... -20 °C)<br>IP 67 / IP 69 to IEC/EN 60529<br>IP 69K to ISO 20653 |
| $B_{10d}$ (10 % load) | 2 million  |
| $T_M$                 | max. 20 years  |
| Switch insert         | 1 x 8080/1-3   |
| Contact material      | Silver, nickel-plated  |
| Switching system      | slow action, positive break NC contacts $\ominus$  |
| Switching elements    | 2 NC contacts, type Zb   |
| Connection            | screw connection terminals   |

Errors and omissions excepted.



Ex position switch with safety function  
Ex ES 97 D-02 -60°C  
Material number: 1430584

## Technical data

|  |   |
|--|---|
| Cable cross-section                    | min. 0,75 mm <sup>2</sup> / AWG 18, max. 1,5 mm <sup>2</sup> / AWG 16, incl. conductor ferrules   |
| Cable entry                            | M20 x 1,5; screwing depth max. 9 mm; use only Ex approved and certified cable glands with min. degree of protection IP 66 and suitable for the specified ambient temperature range  |
| Clamping range                         | 7 ... 12 mm   |
| Utilisation category                   | AC-15   |
| Rated operating current I <sub>e</sub> | max. 2 A or 4 A    |
| Rated operating voltage U <sub>e</sub> | max. 400 VAC, max. 250 VAC for unequal potential  |
| Degree of pollution                    | 3   |
| Mechanical life                        | > 1 million operations  |
| Impact energy                          | max. 7 J  |
| Temperature class                      | T6  |
| Ambient temperature                    | -60 °C ... +55 °C max. 4 A, +60 °C max. 2 A   |
| Short-circuit protection               | 2 A / 4 A gG/gN fuse  |
| Ex marking                             |  II 2G Ex db eb IIC T6 Gb,<br> II 2D Ex tb IIIC T80 °C Db<br>IECEX Ex db eb IIC T6 Gb,<br>Ex tb IIIC T80 °C Db  |
| Approvals                              | BVS 16 ATEX E 052<br>IECEX BVS 16.0052<br>     |
| Weight                                 | 115 g   |

